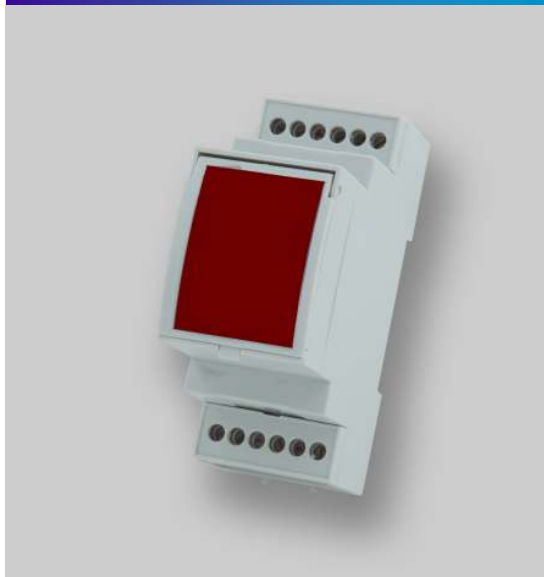
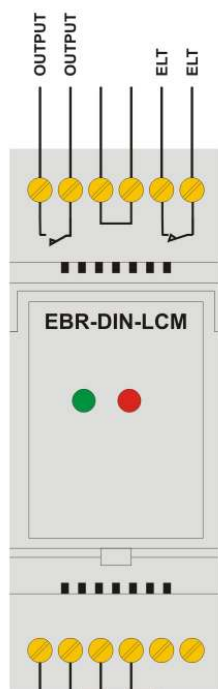


PRODUCT DATA AND INSTALLATION SHEET

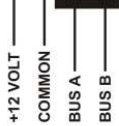
RAPID LIGHTING CONTROL MODULE EBR-LCM-DIN



OUTPUT CONNECTIONS



POWER AND BUS CONNECTIONS



RAPID

Lighting Control System

DESCRIPTION AND OPERATION

The EBR-DIN-LCM single channel lighting control module is used as part of the Rapid lighting control system to switch lighting, and is especially suited to the switching of corridor lighting. It has a single, high current, switched output. A separate relay is used for emergency light testing.

The LCM offers many features including:

- Addressable output
- Adjustable off delays and group delays
- Bus and activity LEDs
- IR or computer front end setup

INSTALLATION AND WIRING

- Install the module in a suitable housing. This unit is compatible with standard DIN rail enclosures
- Wire as in the diagram opposite. Two outputs are provided:
 - Switched output
 - Emergency lighting test output

COMMISSIONING

To bring the lights on prior to commissioning, do one of the following:

- Power the boxes up without a bus controller or area controller connected. After about 15 minutes all channels will energise.
- From the user menu of the programming handset, select *override on Y*, send this to each individual box. Note that if the power is reset, this action will need to be performed again.

Commissioning will normally be performed by our trained commissioning engineers. Please note that prior to commissioning, it is the responsibility of the installing contractor to ensure the following:

- The boxes must be connected and installed as described overleaf
- Mains power must be available
- Luminaires must be wired in
- Bus connection must be established and checked

The LCM can be set up using our infrared programming handset or computer front end. For programming details see the separate programming document.

Note: to accept a programming command from the programming handset, the internal push switch must be pressed first.

SPECIFICATION

Switched output:
10A lighting load
Switch SON lighting loads via a contactor

SUPPLY VOLTAGE 12VDC
TERMINAL CAPACITY 1.5mm²
MATERIAL Flame retardant polycarbonate
TEMPERATURE -10°C to 35°C
CONFORMITY EMC-89/336/EEC LVD-73/23/EEC

PART NUMBERS

EBR-DIN-LCM Rapid single channel DIN rail LCM



IMPORTANT NOTICE!

This device should be installed by a qualified electrician in accordance with the latest edition of the IEE wiring regulations where applicable.

All devices are supplied pre-programmed and identified with a unique reference number. The device must be installed in the position shown on the site installation drawings where the identification number is shown.

Due to our policy of continual product improvement CP Electronics reserves the right to alter the specification of this product without prior notice.

C.P. Automated Lighting
A Division of
C.P. Electronics Ltd
Unit 2 Abbey Manufacturing Estate
Mount Pleasant, Wembley
Middlesex. HA0 1RR

Tel: +44 (0) 20 8900 0671
Fax: +44 (0) 20 8900 0674
www.cpelectronics.co.uk
enquiry@cpelectronics.co.uk

