

SPECIFICATIONS

General information

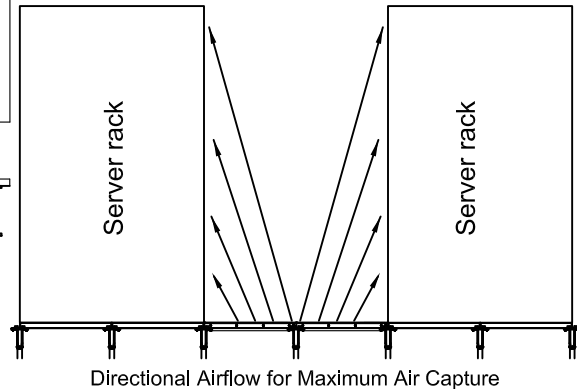
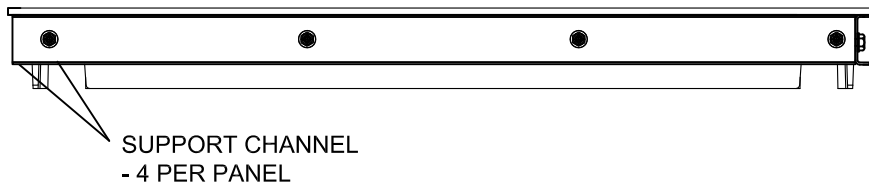
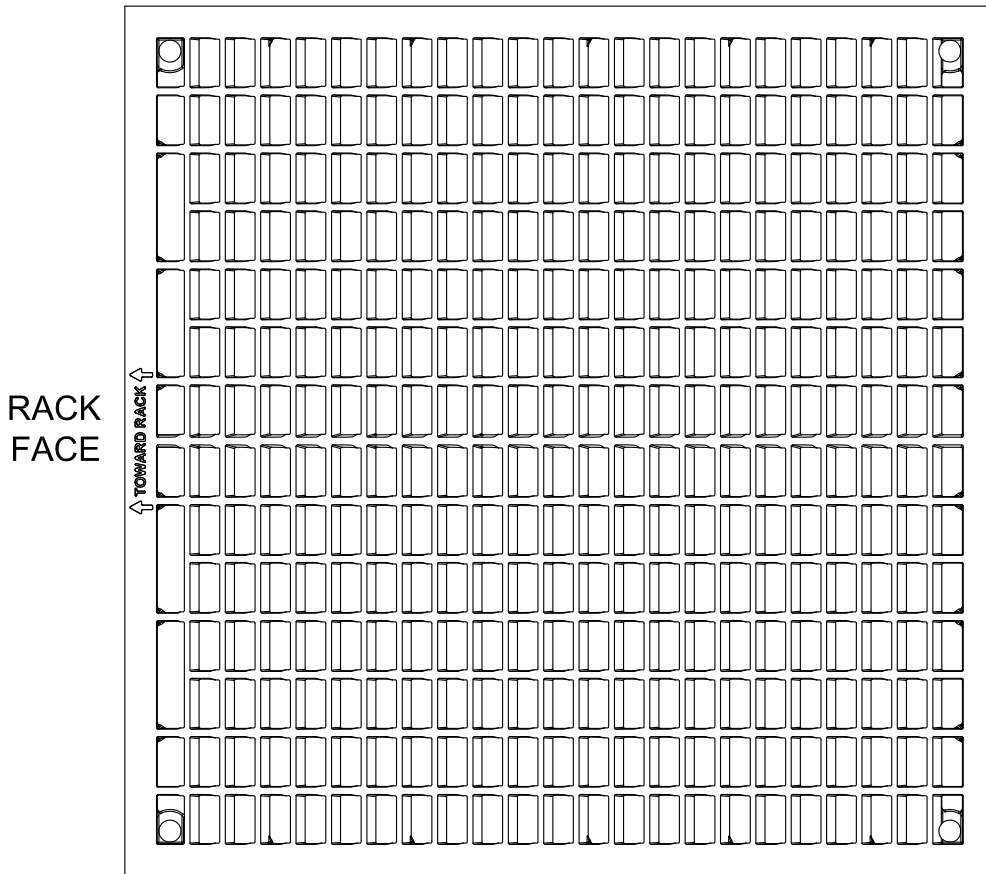
- 60% open area.
- 60cm square lightweight cast aluminum construction.
- Concentrated load rating up to 4.5 kN
- Protected from corrosion by anti-static SparkLite white powder coat finish - 25,000 to 20,000,000,000 ohms when tested at 500 volts per NFPA 99
- Supports over 18kW per rack @ 25 Pa
- Panel height, corner to bottom of lip: 30.50mm
- Total panel height 55.55mm
- Panel weight: 11.2 kg
- Removable by hand
- Directional airflow for 93% capture index

UNDERSTRUCTURE OPTIONS

- Panel is designed with side channels to fit Kingspan Extra Heavy Duty stringer systems or equivalent. Side channels are available in a variety of heights to match adjacent solid panels. Minimum height is 30.5mm.

AIRFLOW CONTROL OPTIONS

- Multi-zone Pedestal Supported Drop In Opposed Blade Damper

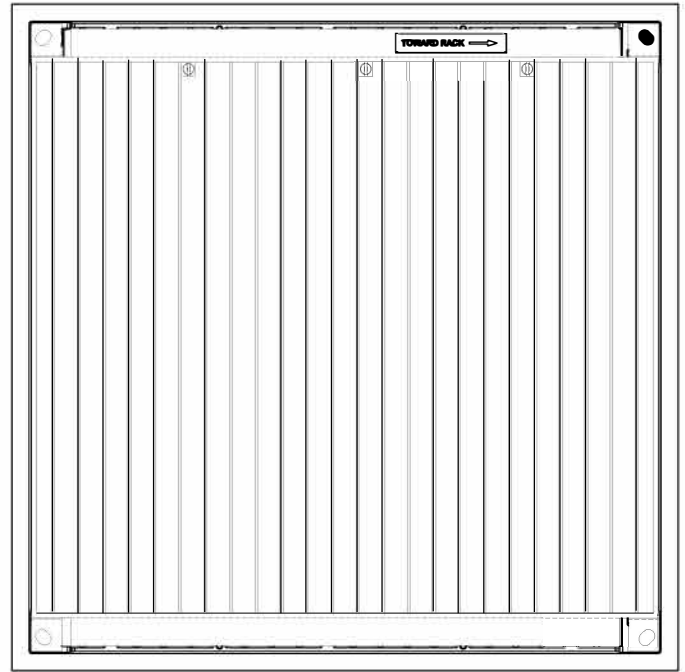
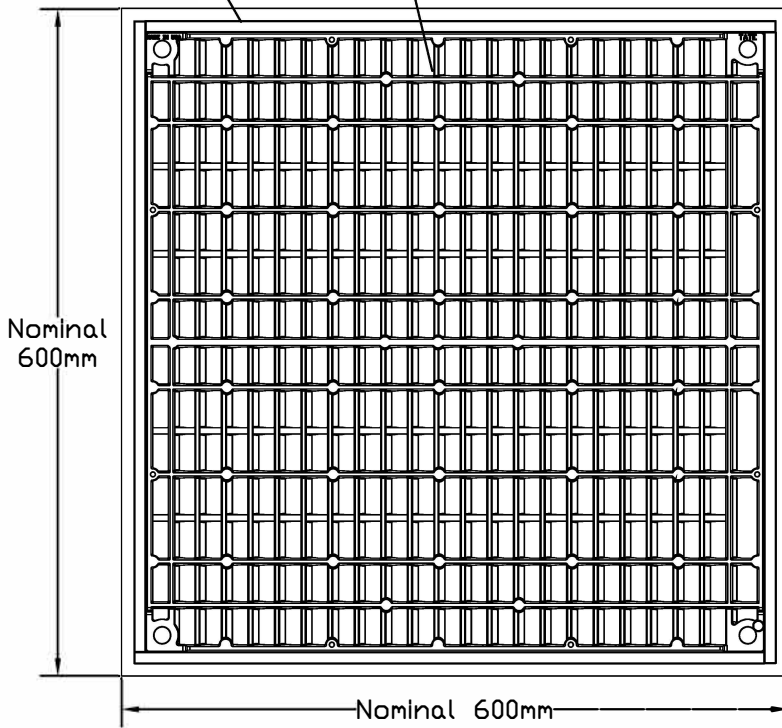


Airflow Performance		50	150	250	350	450	550	650	750	850	950	1050	1150	Capture Index
ΔP Static Pressure (Pa)	No Damper	< 1.0	< 1.0	1.1	2.1	3.6	5.4	7.6	10.2	13.2	16.7	20.5	24.7	93%
	Opposed Blade Damper 100% Open	< 1.0	< 1.0	1.8	3.5	5.8	8.7	12.2	16.2	20.9	26.2	32.1	38.6	
	Opposed Blade Damper 0% Open	3.7	29.2	> 70	> 70	> 70	> 70	> 70	> 70	> 70	> 70	> 70	> 70	
Jet Velocity (m/s)		0.23	0.69	1.16	1.62	2.08	2.55	3.01	3.47	3.94	4.40	4.86	5.32	-

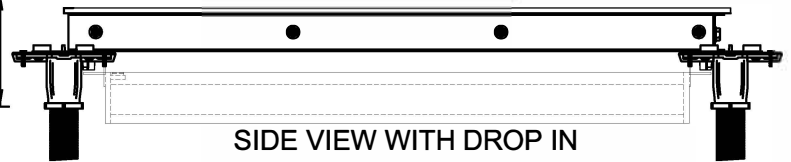
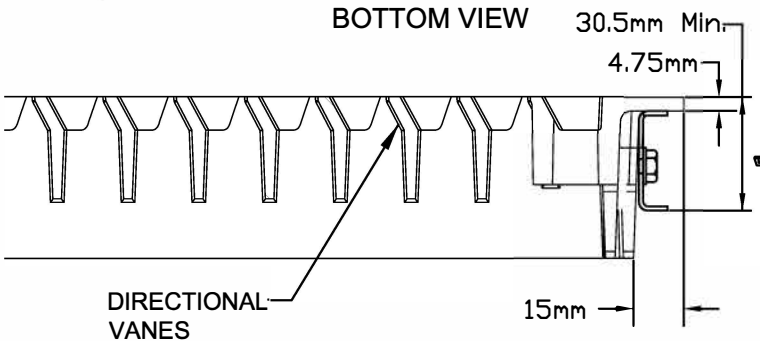
Load Performance Per EN 13264									
Airflow Panel	Understructure	System Weight (kg/m ²)	EN Class	Static Loads (kN)				Rolling Load (kN)	Impact Loads (kg)
				Concentrated Load (kN)	Safety Factor (kN)	4 Point Concentrated Load (kN)	4 Point Safety Factor (kN)		
KS-DIRECTAIRE AL	Extra Heavy Duty Stringer	36.1	Extra Heavy	4.5	13.5	11.0	22.0	3.0	40.0

SUPPORT CHANNEL
- 4 PER PANEL

POWDER PAINT FINISH
INSIDE & OUT



BOTTOM VIEW WITH DROP IN
OPPOSED BLADE DAMPER



SIDE VIEW WITH DROP IN
OPPOSED BLADE DAMPER

